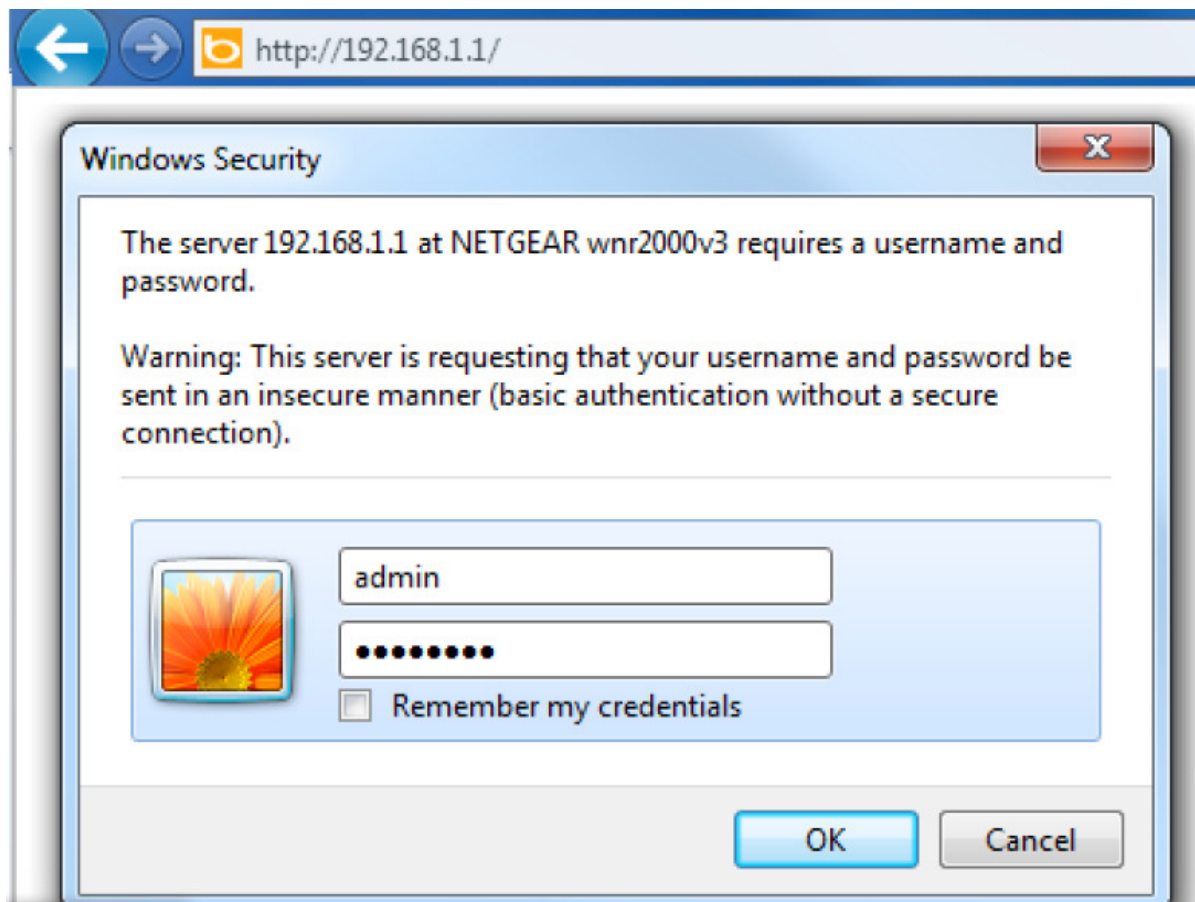


Netgear WNR2000 v3 Setup Guide

- 1 - Plug the router into a power outlet using the power pack provided. Check that one or more lights on the front of the router are lit.
- 2 - Ensure PC is connected to one of the LAN ports on the back of the router.
- 3 - Open an internet browser (Internet Explorer, Firefox, etc.)
- 4 - Type 192.168.1.1 into the address bar as shown below.



5 - A pop up dialog box will prompts for username & password.

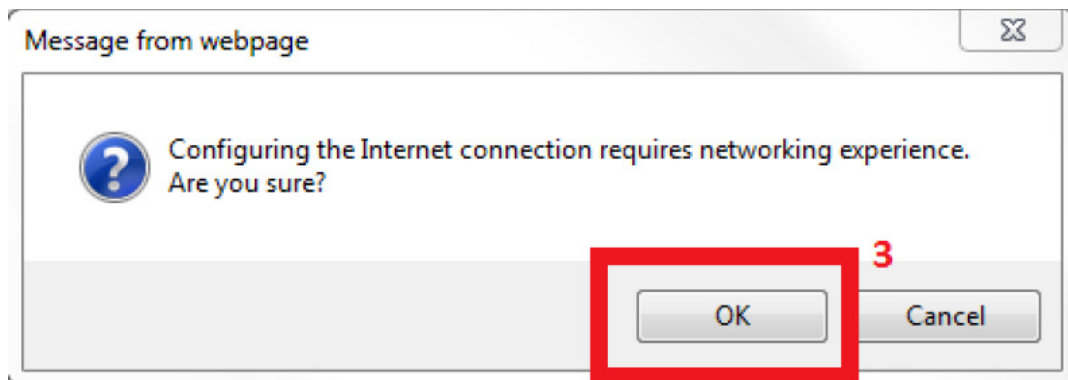
- Username: admin
- Password: password

Click 'OK'

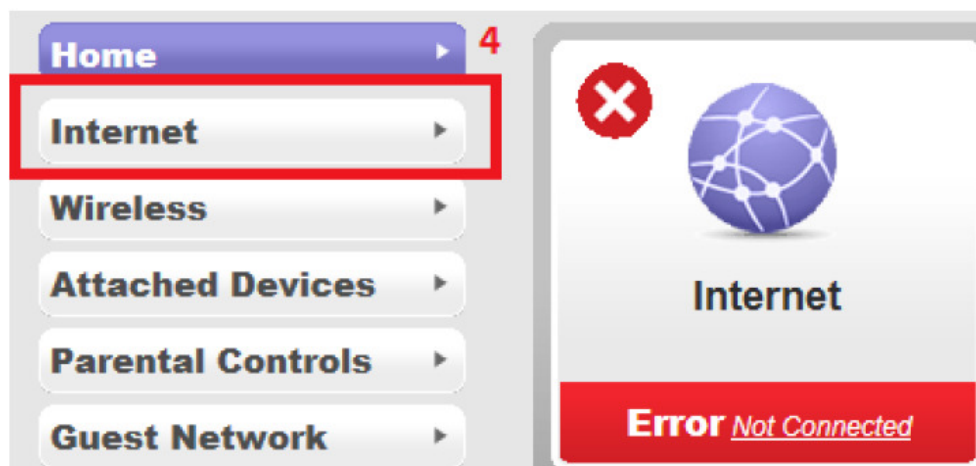
6 – The Netgear Genie will launch. Choose No, I want to configure the Internet connection myself. Click Next.



7 – Click **OK** on the pop up message.



8 – Click **Internet** on the left menu



9 – For the set up for the internet in the basic settings section follow the instructions below:

Basic Settings

Does your Internet connection require a login?

- Yes
 No
-

Internet Service Provider

PPPoE ▾

Login

xxxxxxxx@e-wire.net.au

Password

●●●●●●●●

Service Name (If Required)

Connection Mode

Always On ▾

Idle Timeout(In Minutes)

5

- Does your internet connection require a login? → **YES**
- Internet Service Provider → **PPPoE** or **OTHER** (if PPPoE is not there)
- Log in → your **e-wire email** address (**ENSURE** '@e-wire.net.au' is there)
- Service Name → Blank
- Connection Mode → **Always On**
- **Everything else after that is get automatically from ISP or use default**
 - Internet IP address: **Get automatically from ISP**
 - Domain Name Server Address: **Get Automatically from ISP**
 - Router Mac Address: **Use Default**
- **Click on apply or Submit to save the changes**